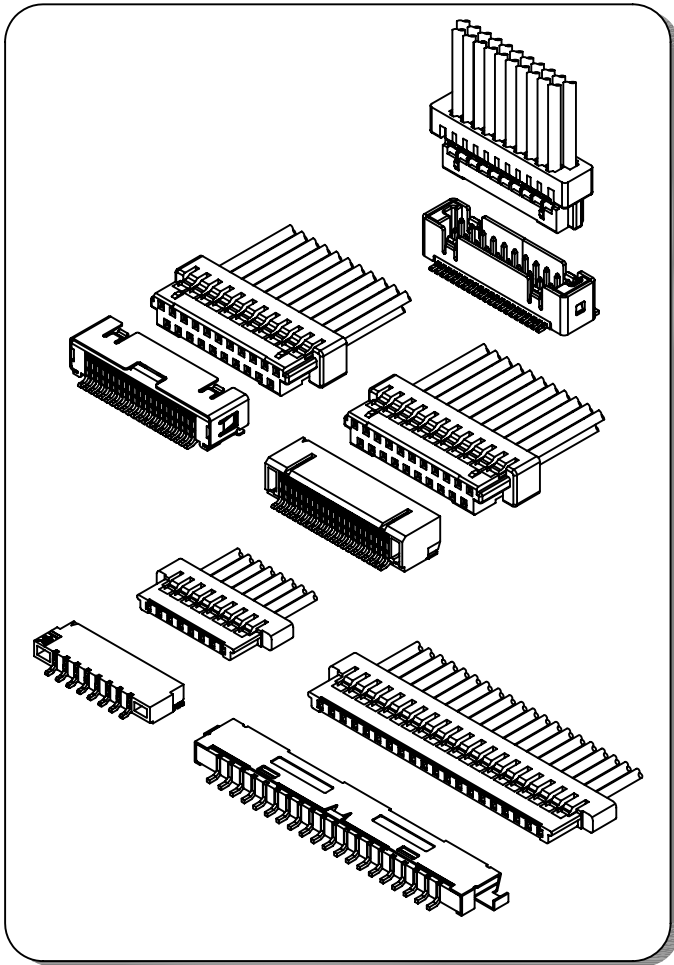


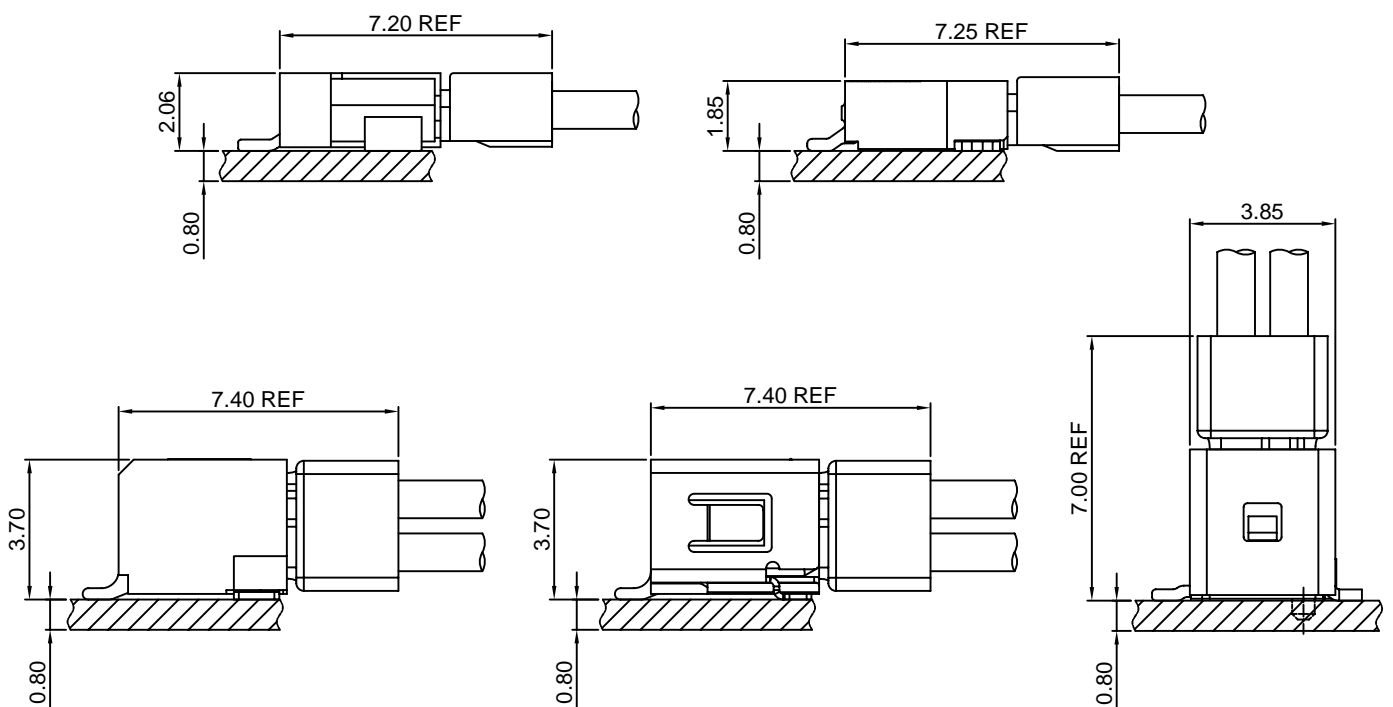
## Specifications

- Current rating:1A AC,DC
- Voltage rating:150V AC,DC
- Temperature range:-40°C~+105°C
- Contact resistance:30mΩMax.
- Insulation resistance:500MΩMin.
- Withstanding voltage:500V AC/minute
- \*Compliant with RoHS and REACH\*
- \*Meet the HF/Halogen Free,need to customize\*
- \*Contact CJT for details\*

## Standards



## Assembly layout

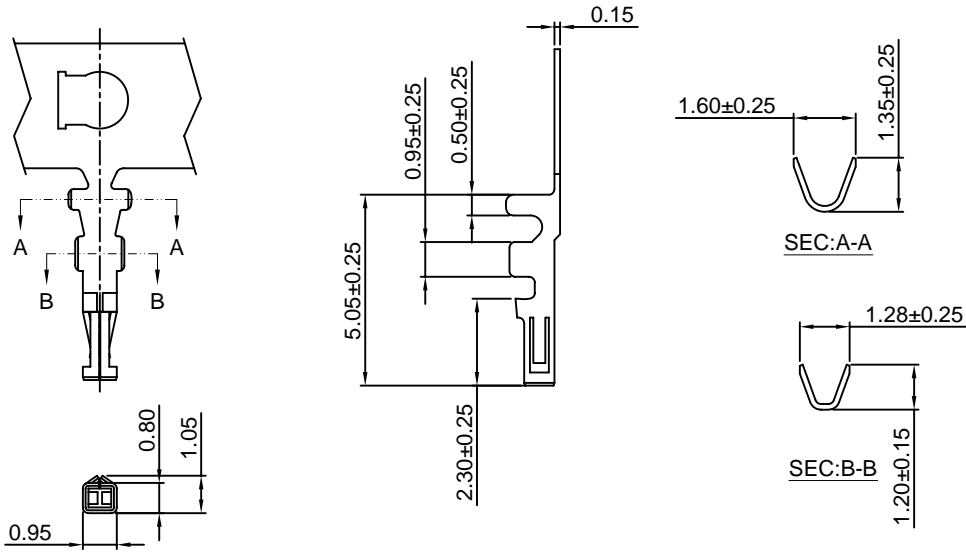


## A1256-T

1.25mm pitch Crimp Terminal

### Reference Informations:

\*Used in CJT A1256 series Housing



### Ordering information & Specifications:

Unit:mm

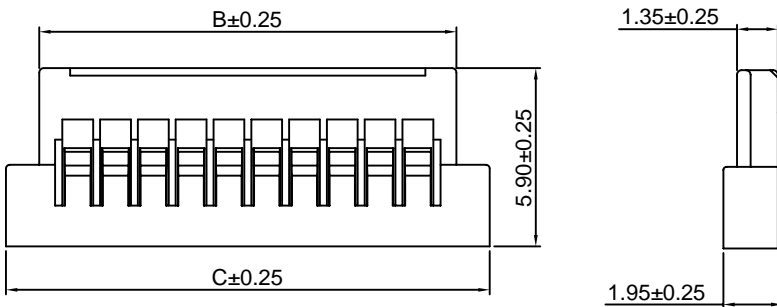
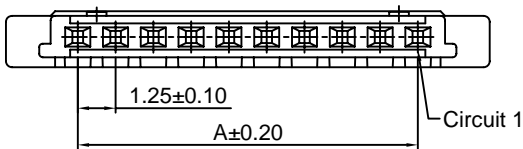
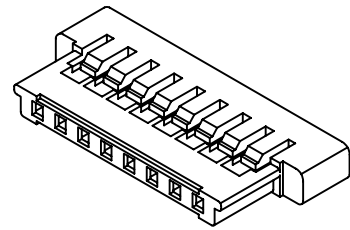
Part NO	Wire Range	Insulation O.D.	Material	Finish	Qty/reel
A1256-GP	AWG#28-#32	0.90mm(max)	Phosphor Bronze	Gold over Nickel	15,000 PCS

## A1256H

1.25mm pitch Housing

### Reference Informations:

- \*Material:Nylon 66,UL94V-0
- \*Suitable CJT A1256 series Terminal
- \*Mates with CJT A1256 series Wafer
- \*Color:Black



### Ordering Information & Dimensions:

PART NO.	Dimensions		
	A	B	C
A1256H-2P	1.25	3.80	6.00
A1256H-3P	2.50	5.05	7.25
A1256H-4P	3.75	6.30	8.50
A1256H-5P	5.00	7.55	9.75
A1256H-6P	6.25	8.80	11.00
A1256H-8P	8.75	11.30	13.50
A1256H-10P	11.25	13.80	16.00
A1256H-15P	17.25	20.05	22.25
A1256H-20P	23.75	26.30	28.50
A1256H-25P	30.00	32.55	34.75
A1256H-30P	36.25	38.80	41.00

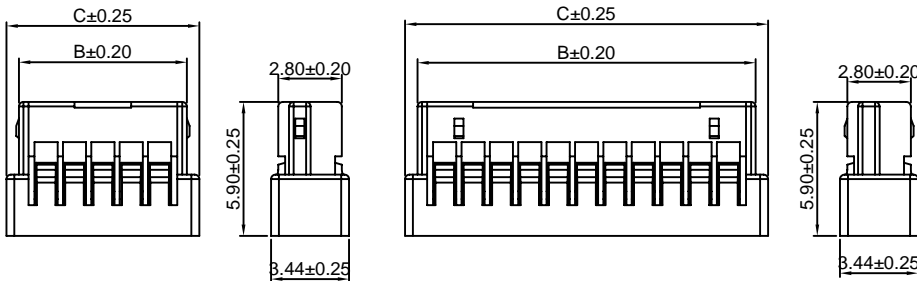
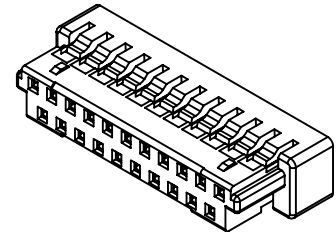
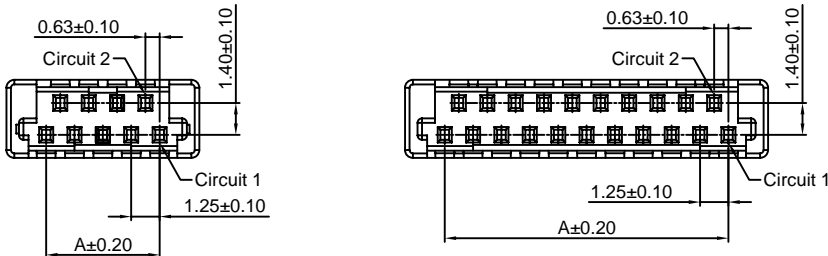
Unit: mm

## A1256HD

1.25mm pitch Dual Row Housing

### Reference Informations:

- \*Material:Nylon 66,UL94V-0
- \*Suitable CJT A1256 series Terminal
- \*Mates with CJT A1256 series Dual Row Wafer
- \*Color:Black



5,7,9,11 Contacts

13,15,17,19,21,31,41 Contacts

### Ordering Information & Dimensions:

PART NO.	Dimensions		
	A	B	C
A1256HD-5P	2.50	4.90	6.00
A1256HD-7P	3.75	6.15	7.25
A1256HD-9P	5.00	7.40	8.50
A1256HD-11P	6.25	8.65	9.75
A1256HD-13P	7.50	9.90	11.00
A1256HD-15P	8.75	11.15	12.25
A1256HD-17P	10.00	12.40	13.50
A1256HD-19P	11.25	13.65	14.75
A1256HD-21P	12.50	14.90	16.00
A1256HD-31P	18.75	21.15	22.25
A1256HD-41P	25.00	27.60	28.50

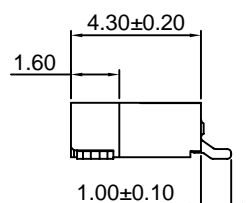
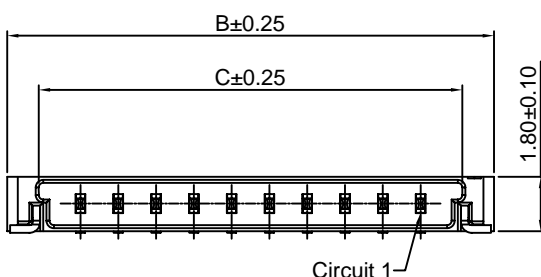
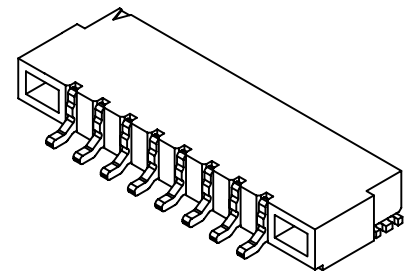
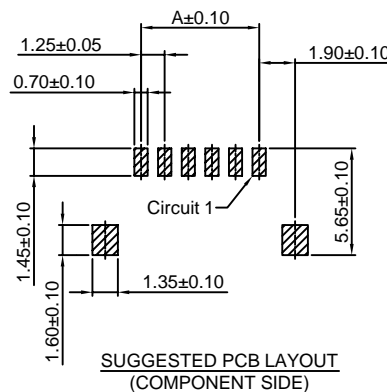
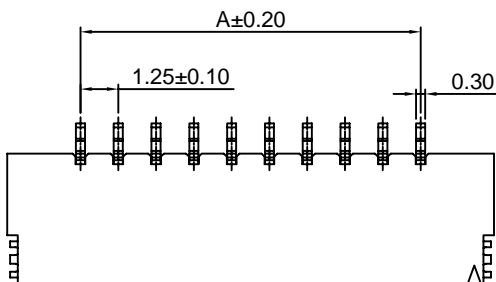
Unit: mm

## A1256WR-S

1.25mm pitch 90° Wafer-SMT TYPE

### Reference Informations:

- \*Material:Pin:Brass/Gold over Nickel  
Solder Tabs:Brass/Tin over Nickel  
Insulator:Nylon 6T,UL94V-0
- \*Mates with CJT A1256 series Housing
- \*Color:White



### Ordering Information & Dimensions:

PART NO.	Dimensions		
	A	B	C
A1256WR-S-2P	1.25	6.10	4.01
A1256WR-S-3P	2.50	7.35	5.26
A1256WR-S-4P	3.75	8.60	6.51
A1256WR-S-5P	5.00	9.85	7.76
A1256WR-S-6P	6.25	11.10	9.01
A1256WR-S-8P	8.75	13.60	11.51
A1256WR-S-10P	11.25	16.10	14.01
A1256WR-S-15P	17.50	22.35	20.26
A1256WR-S-20P	23.75	28.60	26.51
A1256WR-S-25P	30.00	34.85	32.76
A1256WR-S-30P	36.25	41.10	39.01

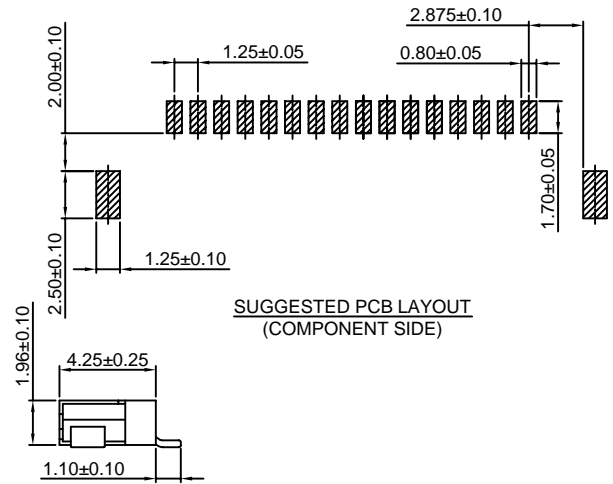
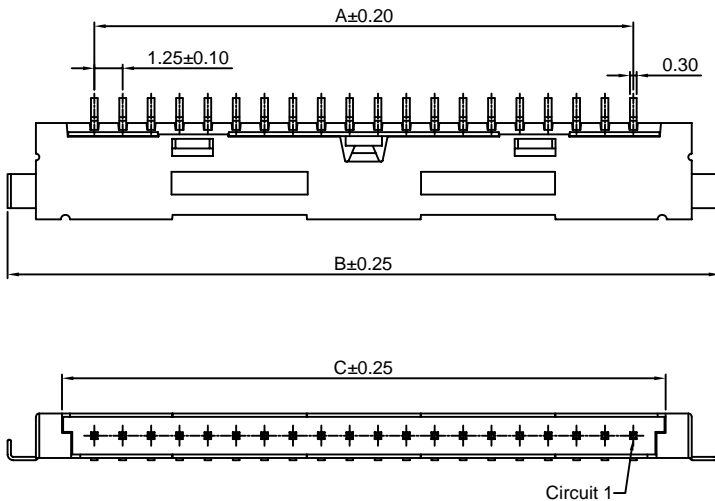
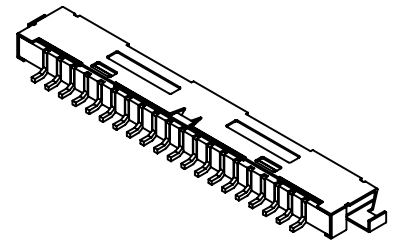
Unit: mm

## A1256WRA-S

1.25mm pitch 90° Wafer-SMT TYPE

### Reference Informations:

- \*Material: Pin: Brass/Tin over Nickel  
Shell: Brass/Tin over Nickel  
Insulator: LCP, UL94V-0
- \*Mates with CJT A1256 series Housing
- \*Color: White



SUGGESTED PCB LAYOUT (COMPONENT SIDE)

Ordering Information & Dimensions:

PART NO.	Dimensions		
	A	B	C
A1256WRA-S-20P	23.75	31.40	26.60
A1256WRA-S-30P	36.25	43.60	39.10

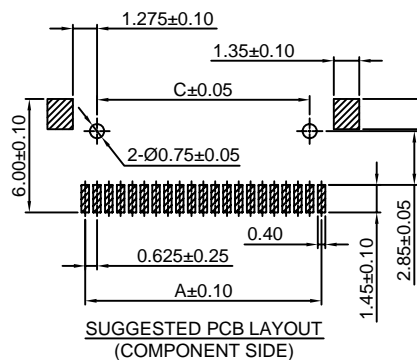
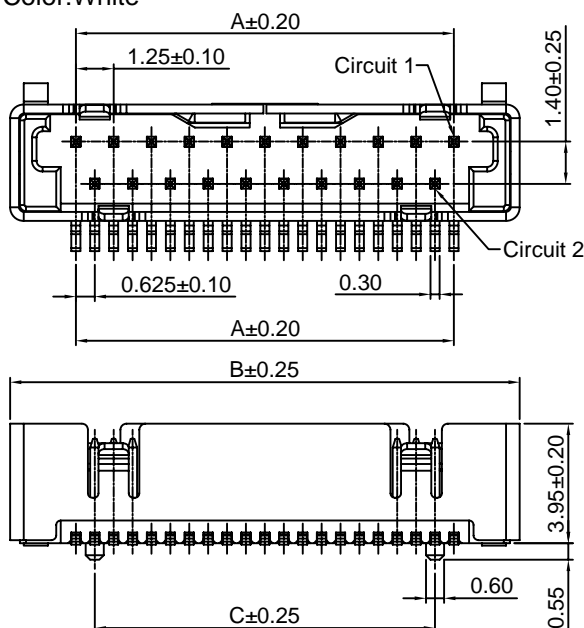
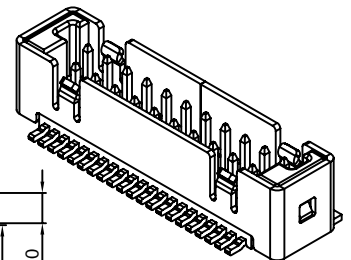
Unit: mm

## A1256WVD-S-F

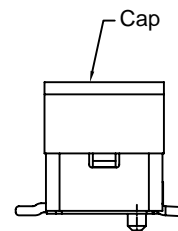
1.25mm Pitch 180° Dual Row Wafer-SMT TYPE

### Reference Informations:

- \*Material: Pin: Brass/Gold over Nickel  
Shell: Brass/Tin over Nickel  
Insulator: Nylon 6T, UL94V-0  
Cap: Nylon 6T, UL94V-0
- \*Mates with CJT A1256 series Dual Row Housing
- \*Color: White



SUGGESTED PCB LAYOUT (COMPONENT SIDE)



Ordering Information & Dimensions:

PART NO.	Dimensions		
	A	B	C
A1256WVD-S-F-21P	12.50	16.85	11.25
A1256WVD-S-F-31P	18.75	23.10	17.50

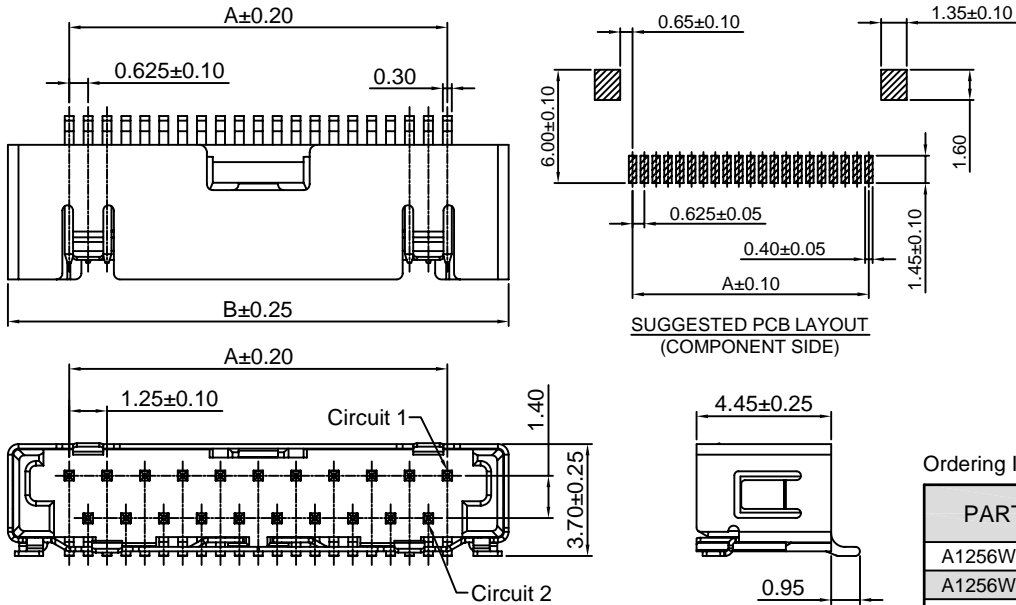
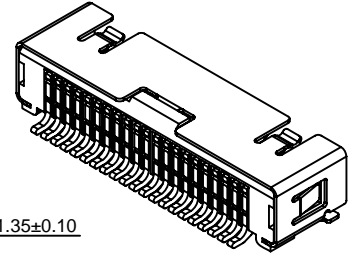
Unit: mm

## A1256WRD-S

1.25mm Pitch 90° Dual Row Wafer-SMT TYPE

### Reference Informations:

- \*Material: Pin: Brass/Gold over Nickel  
Shell: Brass/Tin over Nickel  
Insulator: Nylon 6T, UL94V-0
- \*Mates with CJT A1256 series Dual Row Housing
- \*Color: White



Ordering Information & Dimensions:

PART NO.	Dimensions	
	A	B
A1256WRD-S-21P	12.50	16.55
A1256WRD-S-31P	18.75	22.80
A1256WRD-S-41P	25.00	29.05

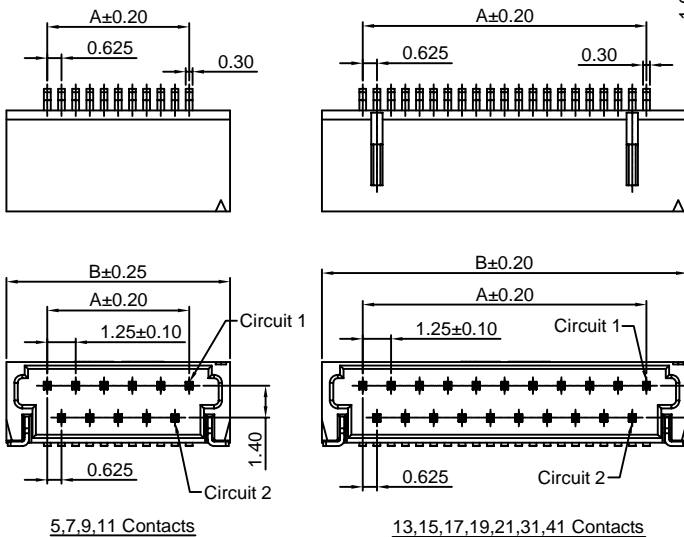
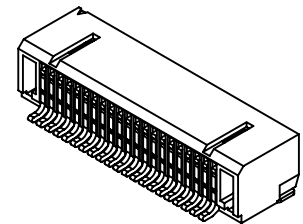
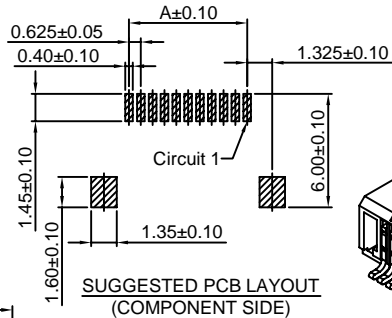
Unit: mm

## A1256WRDA-S

1.25mm pitch 90° Dual Row Wafer-SMT TYPE

### Reference Informations:

- \*Material: Pin: Brass/Gold over Nickel  
Solder Tabs: Brass/Tin over Nickel  
Insulator: Nylon 6T, UL94V-0
- \*Mates with CJT A1256 series dual row Housing
- \*Color: White



Ordering Information & Dimensions:

PART NO.	Dimensions	
	A	B
A1256WRDA-S-5P	2.50	6.10
A1256WRDA-S-7P	3.75	7.35
A1256WRDA-S-9P	5.00	8.60
A1256WRDA-S-11P	6.25	9.85
A1256WRDA-S-13P	7.50	11.10
A1256WRDA-S-15P	8.75	12.35
A1256WRDA-S-17P	10.00	13.60
A1256WRDA-S-19P	11.25	14.85
A1256WRDA-S-21P	12.50	16.10
A1256WRDA-S-31P	18.75	22.35
A1256WRDA-S-41P	25.00	28.60

Unit: mm