

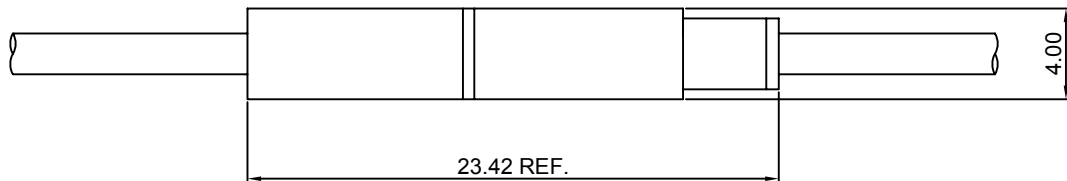
Specifications

Current rating:3A AC,DC
Voltage rating:250V AC,DC
Temperature range:-40°C~+105°C
Contact resistance:10mΩ Max.
Insulation resistance:500MΩ Min.
Withstanding voltage:5000V AC/minute
Compliant with RoHS and REACH
Meet the HF/Halogen Free,need to customize
Contact CJT for details

Standards



Assembly layout

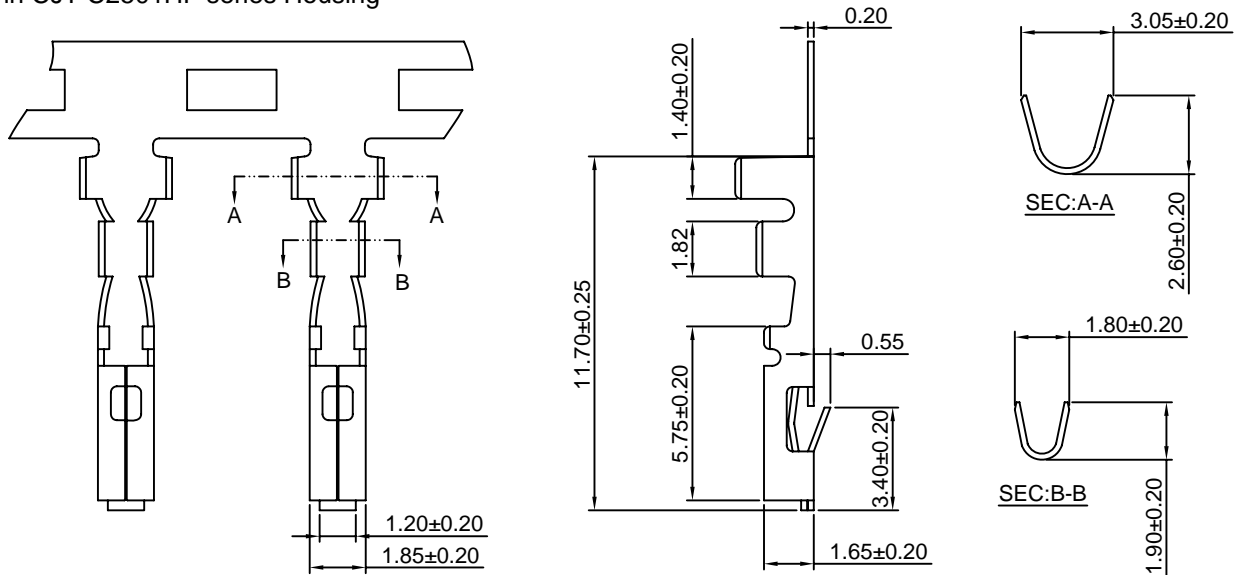


C2501F-T

2.50mm pitch Crimp Terminal

Reference Informations:

*Used in CJT C2501HF series Housing



Ordering information & Specifications:

Unit:mm

Part NO.	Wire Range	Insulation O.D.	Material	Finish	Qty/reel
C2501F-TB	AWG#22-#28	1.80mm(max)	Brass	Tin over Nickel	7,000 PCS
C2501F-TP	AWG#22-#28	1.80mm(max)	Phosphor Bronze	Tin over Nickel	7,000 PCS
C2501F-GB	AWG#22-#28	1.80mm(max)	Brass	Gold over Nickel	7,000 PCS
C2501F-GP	AWG#22-#28	1.80mm(max)	Phosphor Bronze	Gold over Nickel	7,000 PCS

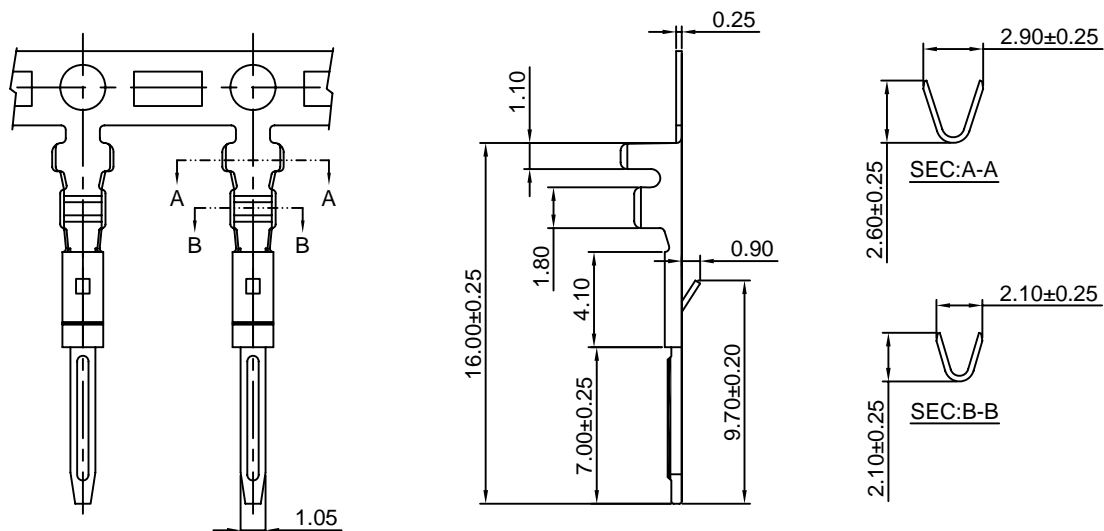
Optional Gold plating available but MOQ requested

C2501M-T

2.50mm pitch Crimp Terminal

Reference Informations:

*Used in CJT C2501HM series Housing



Ordering information & Specifications:

Unit:mm

Part NO.	Wire Range	Insulation O.D.	Material	Finish	Qty/reel
C2501M-TB	AWG#22-#28	1.80mm(max)	Brass	Tin over Nickel	10,000 PCS
C2501M-TP	AWG#22-#28	1.80mm(max)	Phosphor Bronze	Tin over Nickel	10,000 PCS
C2501M-GB	AWG#22-#28	1.80mm(max)	Brass	Gold over Nickel	10,000 PCS
C2501M-GP	AWG#22-#28	1.80mm(max)	Phosphor Bronze	Gold over Nickel	10,000 PCS

Optional Gold plating available but MOQ requested

C2501HF

2.50mm Pitch Housing

Reference Informations:

- *Material: Nylon 66, UL94V-2 or UL94V-0
- *Suitable CJT C2501F series Terminal
- *Mates with CJT C2501HM series Housing
- *Color: Red

Ordering Information:

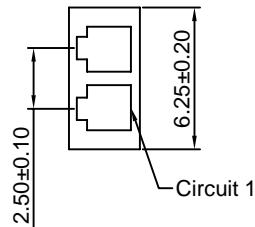
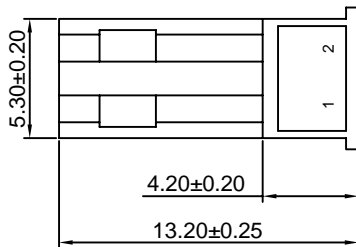
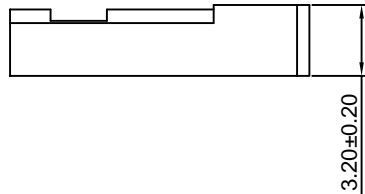
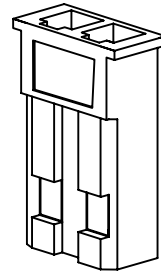
C2501HF-XP - **
1 2

1. Part No.

2. Color:

(blank): Red (Nylon 66 UL94V-2)

WH: White (Nylon 66 UL94V-0)



Unit: mm

C2501HM

2.50mm Pitch Housing

Reference Informations:

- *Material: Nylon 66, UL94V-2 or UL94V-0
- *Suitable CJT C2501M series Terminal
- *Mates with CJT C2501HF series Housing
- *Color: Red

Ordering Information:

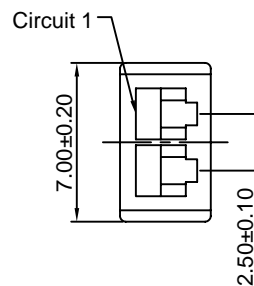
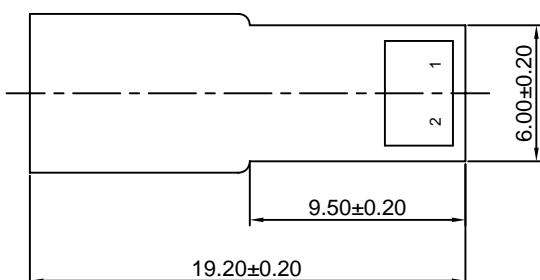
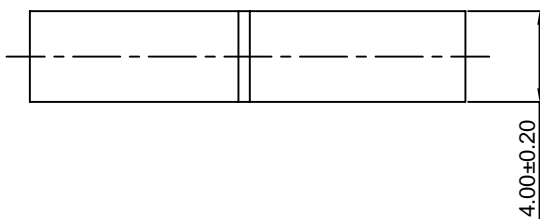
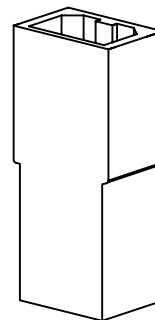
C2501HM-XP - **
1 2

1. Part No.

2. Color:

(blank): Red (Nylon 66 UL94V-2)

WH: White (Nylon 66 UL94V-0)



Unit: mm